

Getting There:

From Interstate 35, exit at the Wyoming exit. (#135)
Go east out of Wyoming, on Viking Blvd. until the road curves to the left.
Follow the road as it is curving (it turns into Goldman at this point).
Wyoming Oakwood is on the left as you make the curve.

Townhome Features

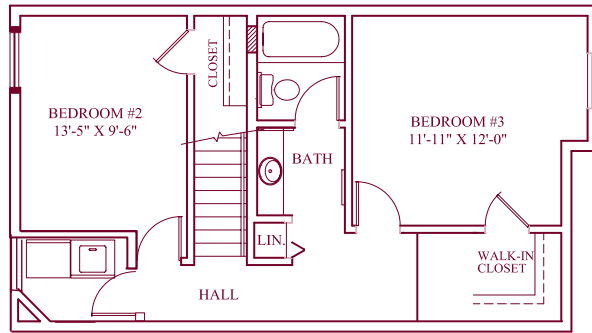
- Spacious 2 and 3 bedroom townhomes
- Private Entryway
- One and 1/2 baths in 3 bedroom townhomes
- Fully equipped kitchen to include: range, refrigerator, dishwasher and garbage disposal
- Full size washer and dryer in each home
- Window treatments provided
- Individual Central Heat/Air Conditioning
- Generous storage to include walk in closets
- Attached garage included
- On-site play area
- Patio

Community Features

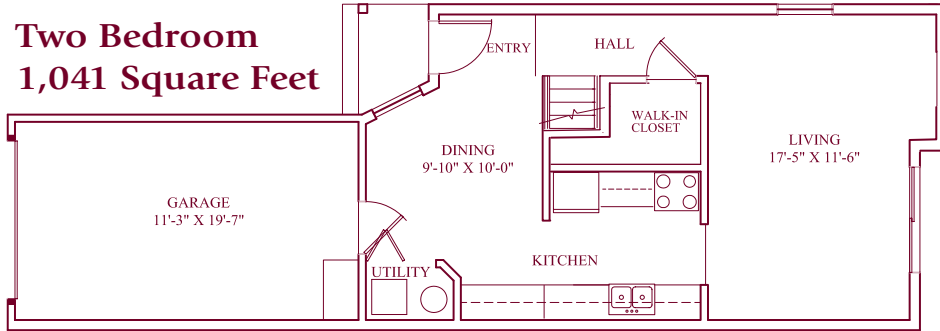
- Wyoming is tucked into a quiet rural setting but just minutes from shopping & conveniences.
- Easy Access to Interstate 35
- Close to nature trails, Carlos Avery Wildlife Management Area, many area lake & snowmobile trails
- Independent School District 831
- Wyoming Elementary School
- Southeast Junior High School
- Forest Lake Area High School



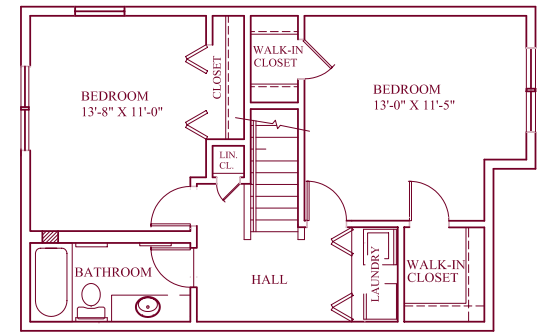
The Floor Plans



**Two Bedroom
1,041 Square Feet**

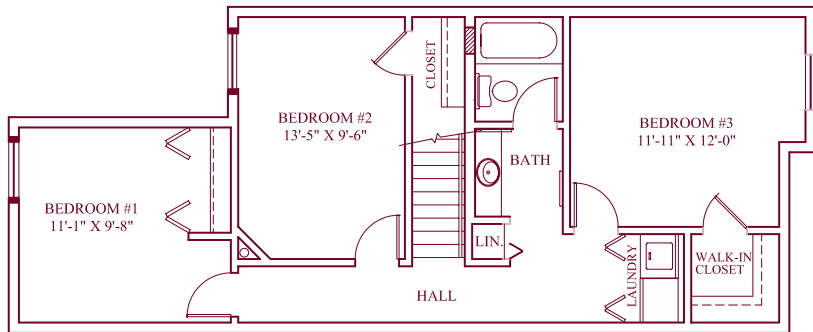


**Two Bedroom
1,254 Square Feet**

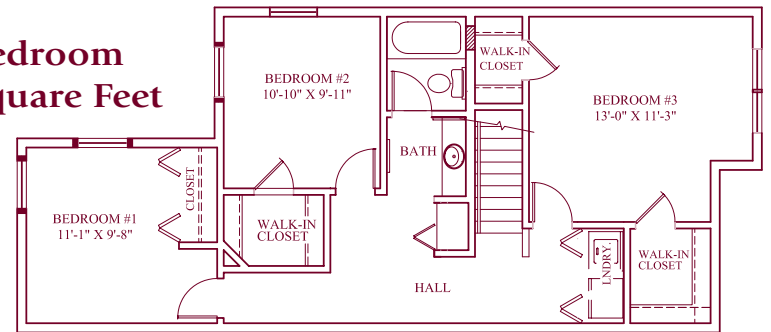


Wyoming Oakwood Phase I

Wyoming Oakwood Phase II



**Three Bedroom
1,484 Square Feet**



**Three Bedroom
1,294 Square Feet**

