



17549 96th Avenue N
 Maple Grove, MN 55311
 (763) 315-1115

Maple Ridge Townhomes



Maple Ridge Townhomes

17549 96th Avenue N
 Maple Grove, MN 55311



Take I-94 to the Dunkirk Avenue exit.
 Go south on Dunkirk to County Road 30
 Take County Rd 30 west to Queensland Ln.
 Take a left onto Queensland Lane.
 Follow Queensland Lane
 to 96th Avenue.
 Take a left onto 96th Avenue
 and follow it to Maple Ridge.

Directions



Townhome Features

- ★ Spacious 2 or 3 bedroom townhomes
- ★ One and 1/2 baths in most townhomes
- ★ Fully equipped kitchen to include: range, refrigerator, dishwasher and garbage disposal
- ★ Full size washer and dryer in each home
- ★ Window treatments provided
- ★ Individual Central Heat/Air Conditioning
- ★ Generous storage to include walk in closets
- ★ Attached garage included
- ★ On-site play area

Community Features

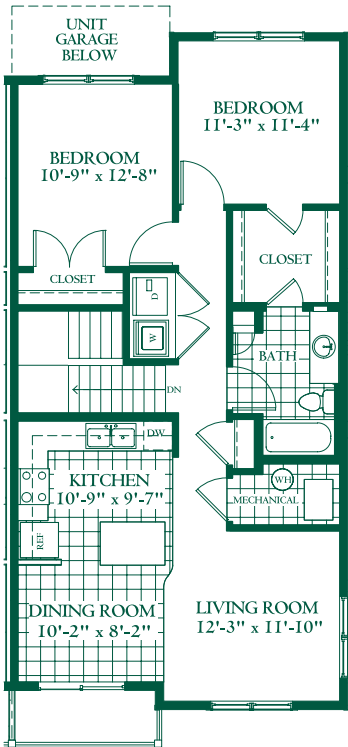
- ★ Maple Ridge is conveniently located close to shopping, services & the new Maple Grove Hospital
- ★ Minutes from "Downtown" Maple Grove
- ★ Easy access to I-94
- ★ On the Maple Grove Trail System & close to parks
- ★ Tucked into a quiet wooded setting
- ★ Osseo School District 296

Maple Grove Senior High

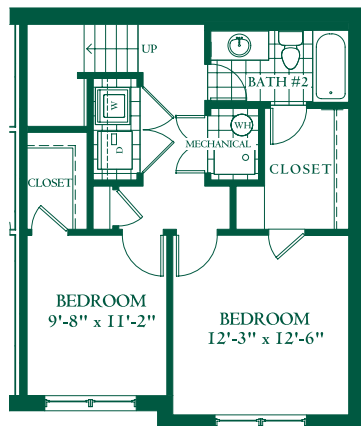
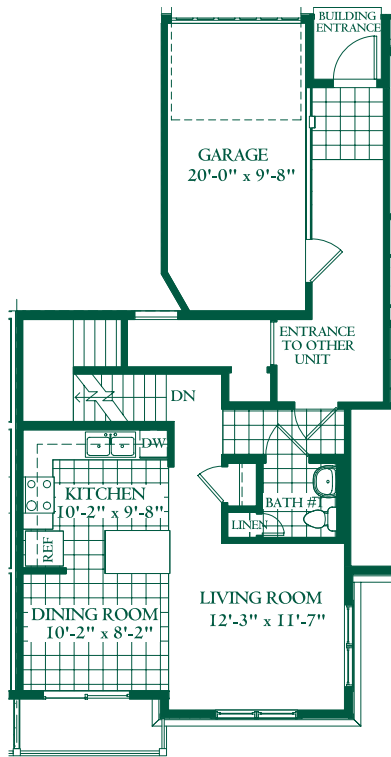
Maple Grove Junior High

Rush Creek Elementary

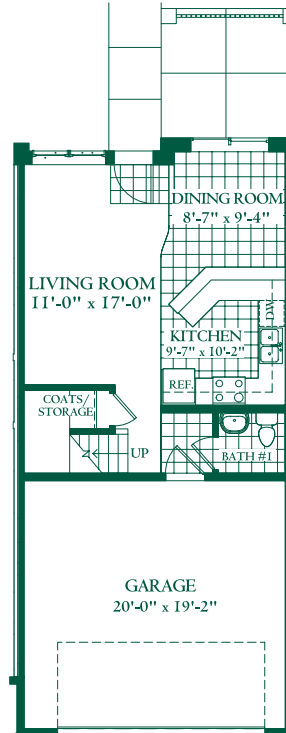
Floor Plans



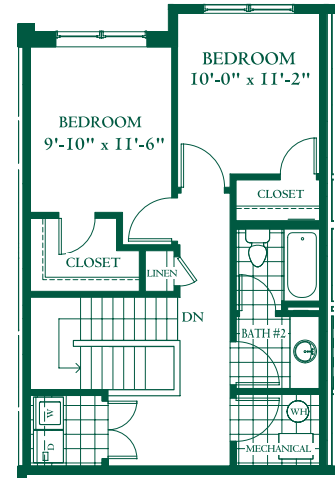
Two Bedroom Flat
968 square feet



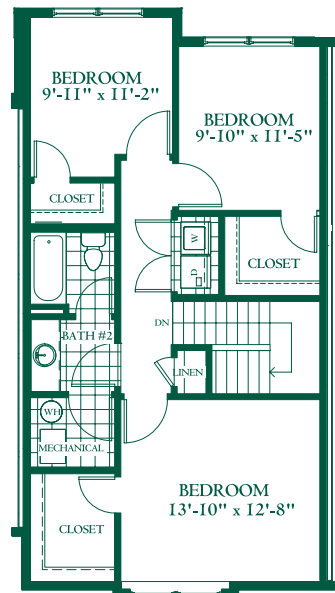
Two Story - Two Bedroom
1,101 square feet



First Floor
Two or Three Bedroom
Townhome



2nd Floor
Two Bedroom Townhome
1,122 square feet



2nd Floor
Three Bedroom Townhome
1,287 square feet

Professionally Managed By:
Northstar Residential

