

115-A Henry Road, Big Lake, Minnesota 55309

763-263-0449




THE CROSSING

AT BIG LAKE STATION

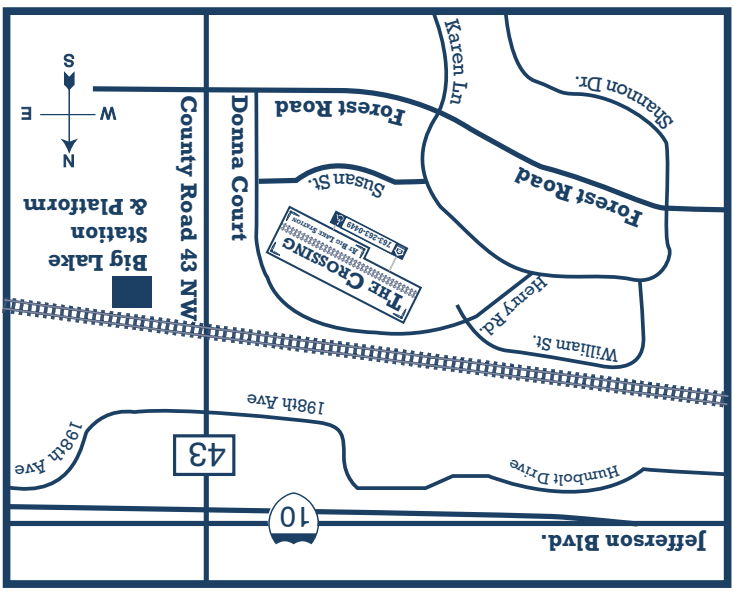
THE CROSSING

AT BIG LAKE STATION

763-263-0449




115-A Henry Road, Big Lake, MN 55309



Getting There...

- Take Highway 10 to County Rd 43
- Go South on 43 to Forest Road
- Take a right onto Forest Road and follow to Donna Court.
- Take a right onto Donna Court and follow to property.

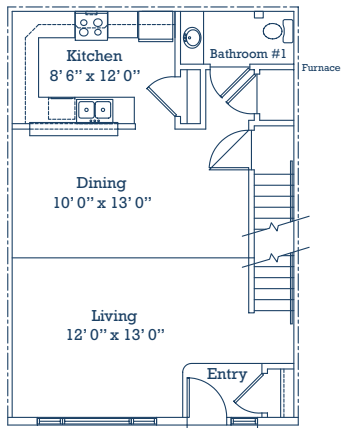
Your Home.....

- ✘ **Smoke Free Community**
- ✘ **Spacious 2,3 and 4 bedroom townhomes**
- ✘ **One and 1/2 baths in all townhomes**
- ✘ **Fully equipped kitchen to include: range, refrigerator, dishwasher, garbage disposal and microwave**
- ✘ **Full size washer and dryer in each home**
- ✘ **Window treatments provided**
- ✘ **Individual Central Heat/Air Conditioning**
- ✘ **Generous storage to include walk in closets**
- ✘ **Two underground garage stalls included**
- ✘ **On-site play area**
- ✘ **Private entryways**

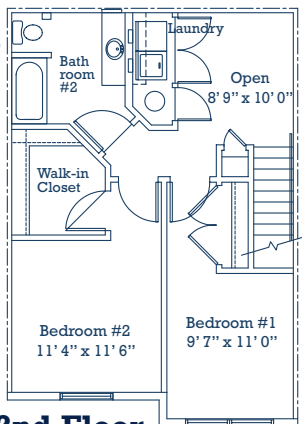
Your Community...

- ✘ **Steps from the Northstar Commuter Rail Station**
- ✘ **Great Access to Highway 10**
- ✘ **Close to Shopping and Conveniences**
- ✘ **Big Lake School District**
Big Lake Senior High
Big Lake Middle School
Liberty Elementary School

The Floor Plans...

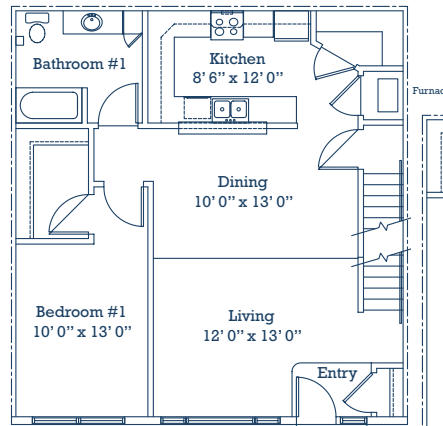


1st Floor

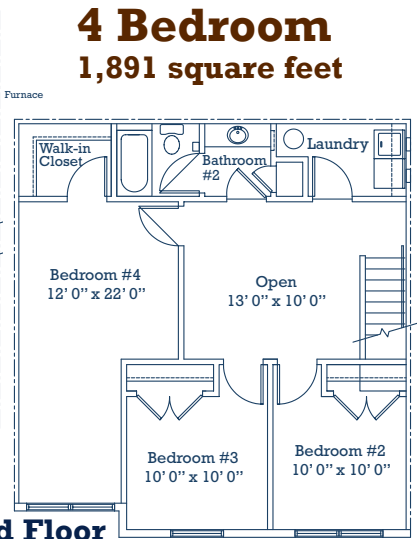


2nd Floor

**2 Bedroom
1,378 square feet**

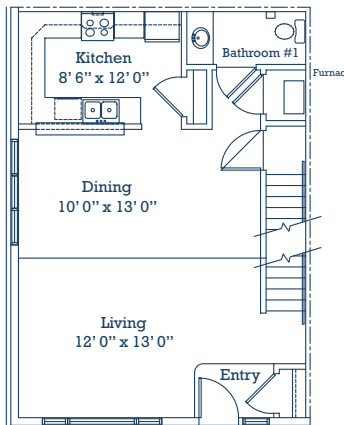


1st Floor

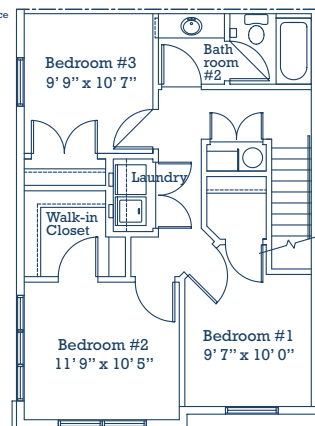


2nd Floor

**4 Bedroom
1,891 square feet**

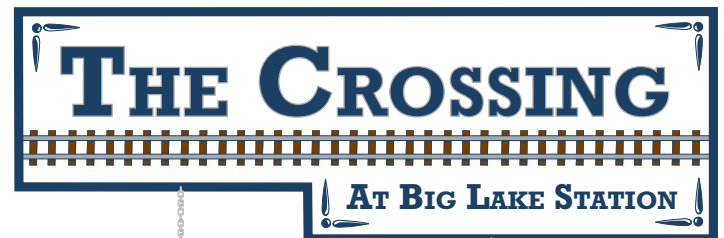


1st Floor



2nd Floor

**3 Bedroom
1,445 square feet**



ESTABLISHED 2012

**115-A Henry Road
Big Lake, MN 55309
(763) 263-0449**

Professionally Managed By:

NORTHSTAR RESIDENTIAL
www.nsresidential.com

