

## ***Apartment Features***

- ☛ Spacious 1, 2 and 3 Bedroom Apartments
- ☛ Two Bathrooms in 2 and 3 Bedroom Homes
- ☛ Heat Included
- ☛ Washer and Dryer in Each Home
- ☛ Fully Equipped Kitchen
- ☛ Window Treatments Provided
- ☛ Generous Closets
- ☛ Underground Parking
- ☛ Smoke Free Community

## ***Building Amenities***

- ☛ Elevator
- ☛ On-site Play Area
- ☛ Exercise Facility
- ☛ Community Room

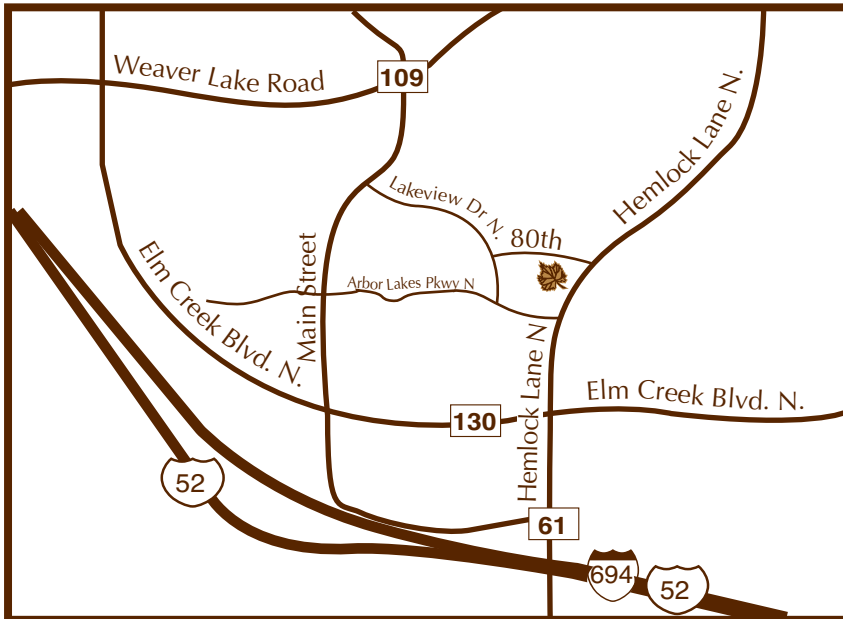
## ***The Schools***

- ☛ Rice Lake Elementary
- ☛ Maple Grove Junior High
- ☛ Osseo Senior High

## ***The Community***

- ☛ Close to maple Grove Transit Center
- ☛ Great Access to Highways 694, 494 & 169
- ☛ Close to Shopping and Conveniences
- ☛ One Block to Maple Grove Central Park

***bottineau@nsresidential.com ☛ (612) 558-7359***

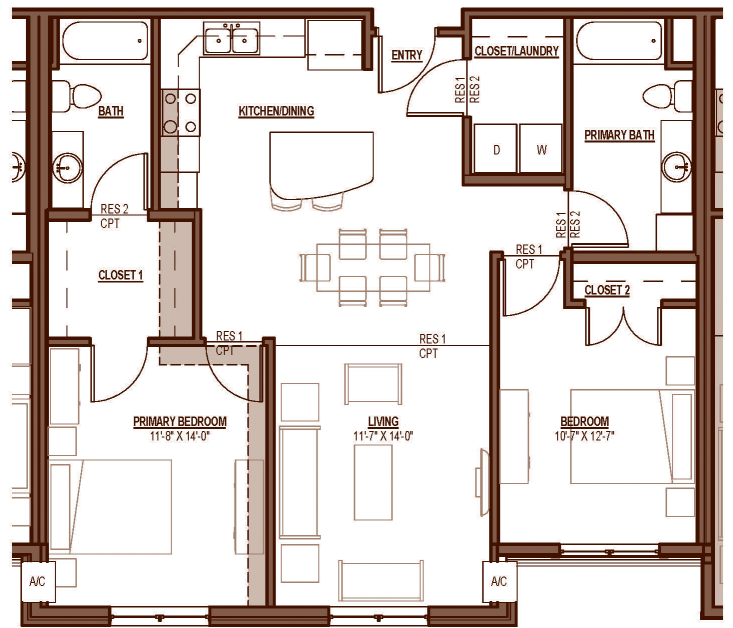
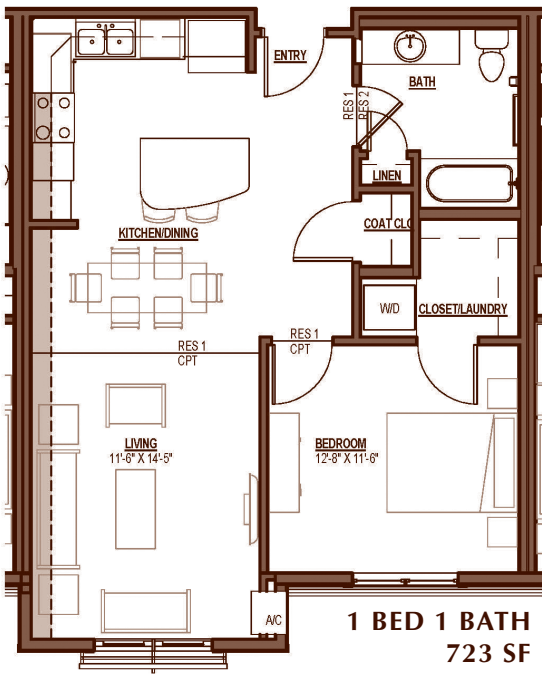


## ***Getting There***

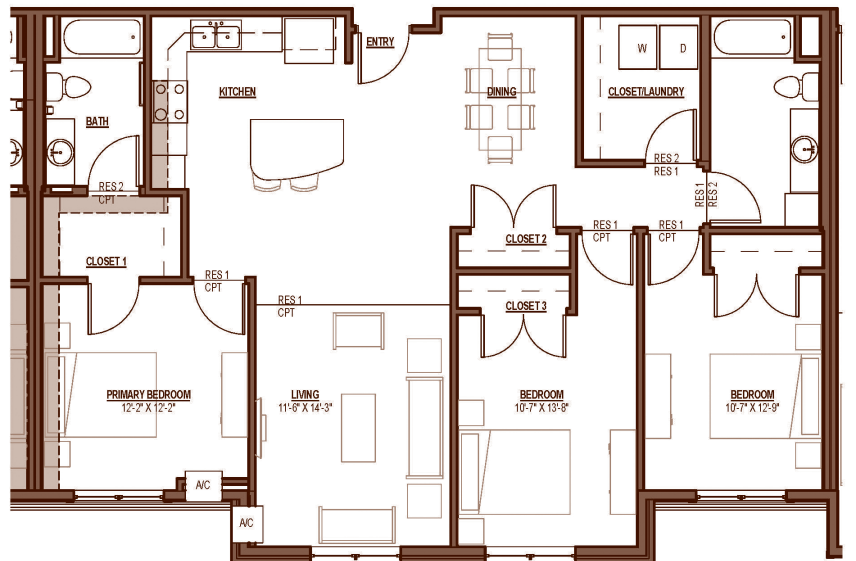
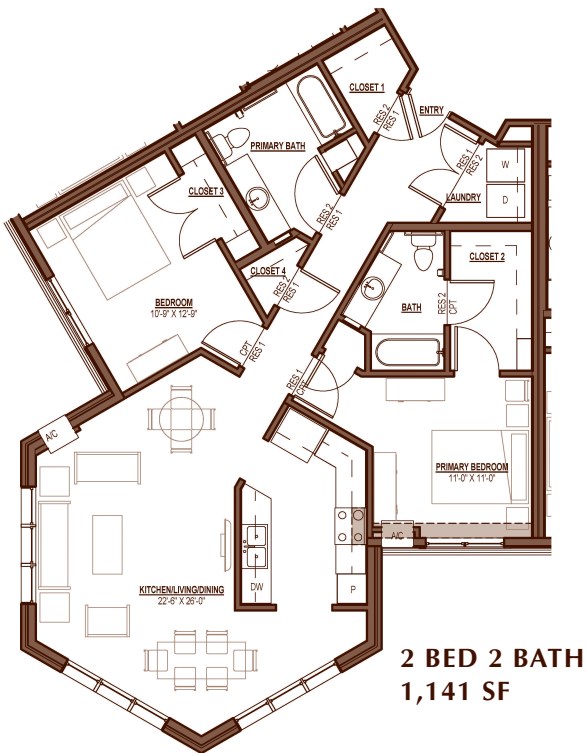
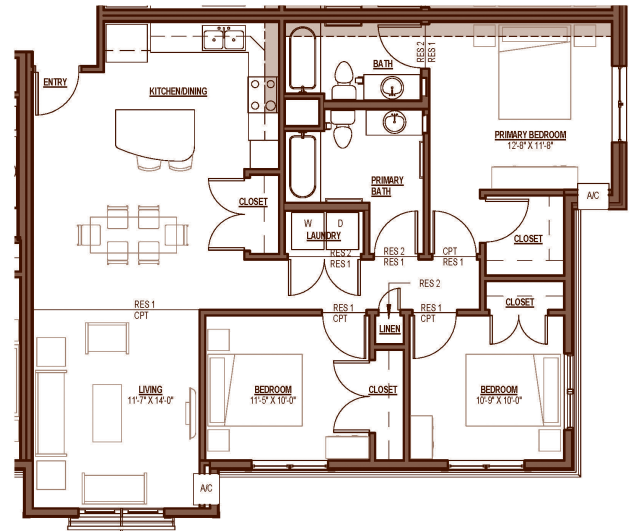
Take 694 to the Hemlock Lane exit.  
Go north on Hemlock Lane  
to Arbor Lakes Parkway.  
Turn left onto Arbor Lakes Parkway  
and go to Lakeview Drive.  
Turn right onto Lakeview Drive  
and go to 80<sup>th</sup> Avenue North.  
Turn right and the property  
will be at the end of 80<sup>th</sup> Avenue N.

***11875 80th Ave N.  
Maple Grove, MN 55369  
(612)558-7359***





# Bottineau Ridge Floor Plans



Professionally Managed By:  
**NORTHSTAR RESIDENTIAL**

